



Harmes Turner Brown

Homefield Road, Walton-on-Thames, Surrey, KT12 3RG



£180,000 Leasehold

75% Ownership

A well-presented one bedroom ground floor apartment, forming part of a small modern development constructed in 2023, offered to the market with no onward chain.

Harmes Turner Brown are pleased to offer this one bedroom ground floor apartment. The property provides bright and spacious accommodation with a contemporary finish throughout. The main living area is a generous open-plan sitting / dining room with a modern fitted kitchen, featuring integrated appliances and ample storage. The double bedroom is well proportioned and served by a stylish bathroom suite.

Externally, the development offers allocated parking and well-maintained communal areas.

Conveniently located for local amenities and transport links, the property would make an ideal first-time purchase, investment, or downsize opportunity.

Key features include:

- Ground floor apartment
- One double bedroom
- Built in 2023

INDEPENDENT ESTATE AGENTS

www.htbproperty.com

SALES • LETTINGS • MANAGEMENT

Walton Branch
45A High Street
Walton on Thames
Surrey KT12 1DH
01932 222266

sales@htbproperty.com
lettings@htbproperty.com



Registered address: 2 AC Court, Hight Street, Thames Ditton KT7 0SR Registered in England, Number 6433673

Molesey Branch
45 Walton Road
East Molesey
Surrey KT8 0DP
0208 001 8385

INDEPENDENT ESTATE AGENTS

www.htbproperty.com

SALES • LETTINGS • MANAGEMENT

Walton Branch
45A High Street
Walton on Thames
Surrey KT12 1DH
01932 222266

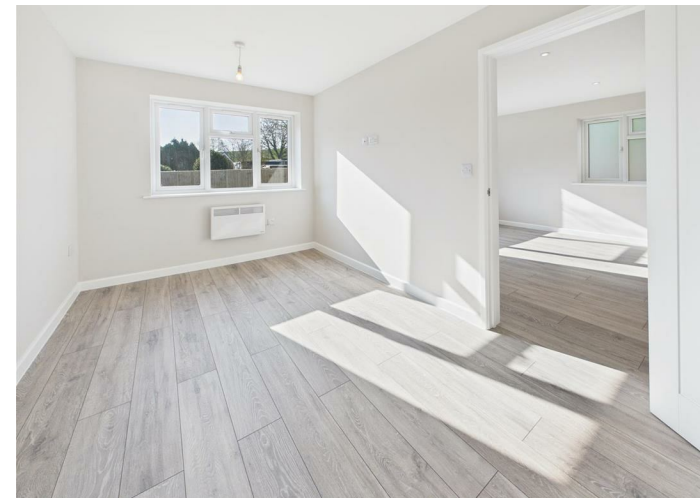
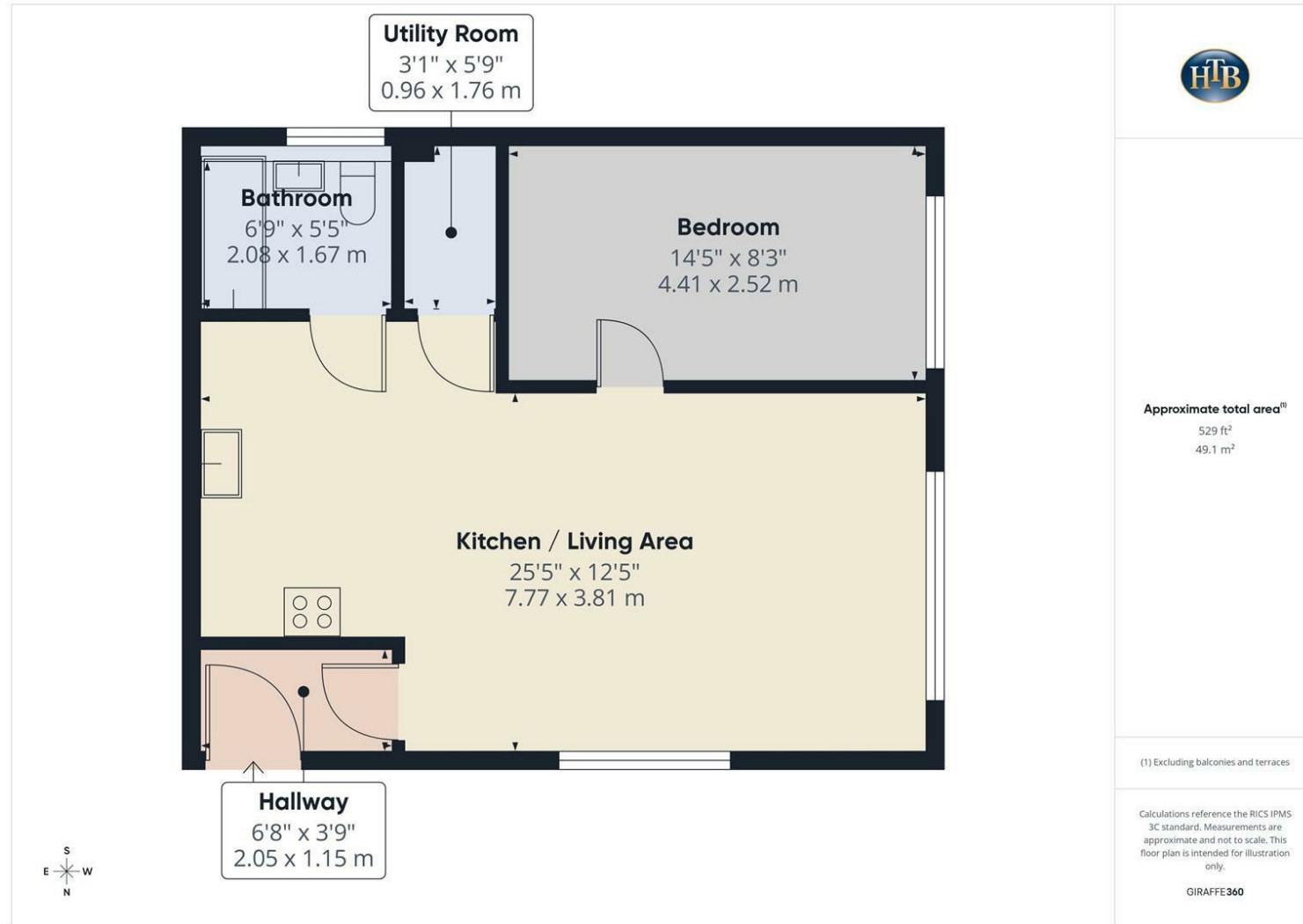
sales@htbproperty.com
lettings@htbproperty.com



Registered address: 2 AC Court, Hight Street, Thames Ditton KT7 0SR Registered in England, Number 6433673

Molesey Branch
45 Walton Road
East Molesey
Surrey KT8 0DP
0208 001 8385

Homefield Road, Walton-on-Thames, Surrey, KT12 3RG



- • Ground floor apartment
- • Built in 2023
- • Contemporary bathroom
- • Bright open-plan living space

- • One double bedroom
- • Modern kitchen with integrated appliances
- • Allocated parking
- • No onward chain

